



CAC/Westwood Safety Protocol

Evacuation (Fire, Gas Leak, etc.):

- Evacuate the building
- Listen to instruction over the PA or by the Ascension Staff
- Use the quickest route with the least resistance

Stay/Hold in Place):

- Need to limit the movement in the building
- Dancing may continue as normal
- Limit restroom trips as much as possible
- There will be staff members in the hallway
- Wait for further instruction from the Ascension/Host School Staff

LockOUT:

- External threat
- Check hallways and bring students inside the gym
- Dancing may continue as normal
- Limit restroom trips as much as possible
- Entry/exit to the building will be limited

LockDOWN:

- Internal threat
- If you are not given a specific location of the threat- go into lock down protocol. You will react to what you see and hear.
- Lock doors, cover window panes, turn off the lights, keep all dancers and spectators silent
- No entry/exit to building (no on in, no one out)

*In case of Emergency, please follow the following steps:

1. Notify Ascension staff/Westwood Staff
2. Notify Campus police on site
3. Notify Campus administrator
4. Notify participants of shelter in place procedures

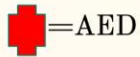
*If you are in need of a bleed kit, there are many bleeding control stations located throughout the school. The closest one to the main gym will be located in the



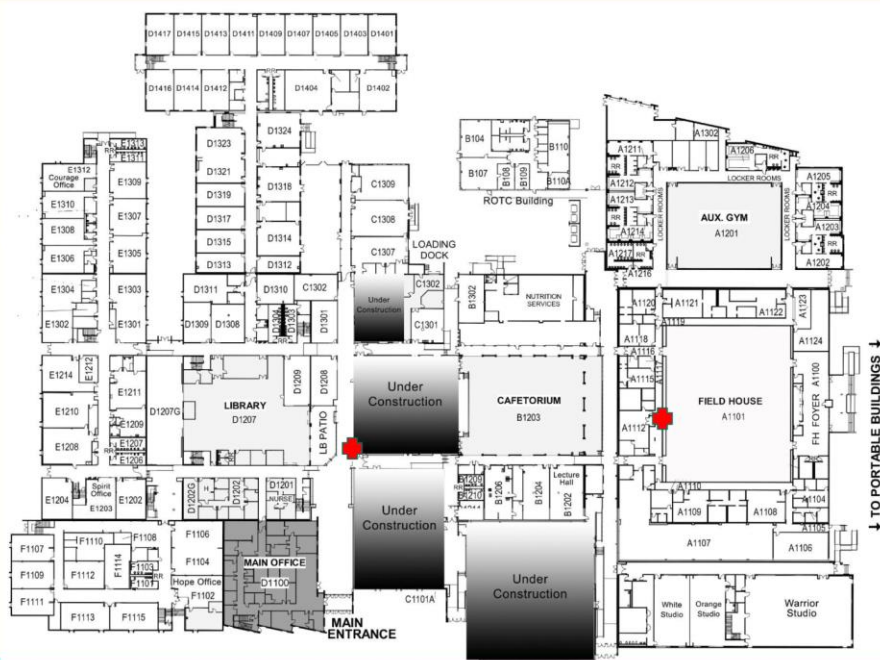
hallway directly outside the main gym.

*If you are in need of a defibrillator, there are many located throughout the school. The closest ones to the dance areas will be in the hallway directly outside the main gym, and another near the library located past concessions.

STB Kits & AED Locations



Stop the Bleed (STB) kits are located in every classroom



↓ TO PORTABLE BUILDINGS ↓